


Why We Do Intestinal Rehabilitation

Dr. David Mercer and Audrea Medina

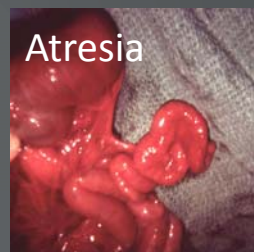
Disclosures

I am a primary investigator in a clinic trial lead by Shire Inc, and am a consultant and lead clinical trial investigator for Zealand Pharma. These two companies make intestinal growth factors, drugs with the potential to help patients with intestinal failure. I will not discuss off label use of medications, but may discuss these products in pointing towards future directions in the field.



What is Intestinal Failure?

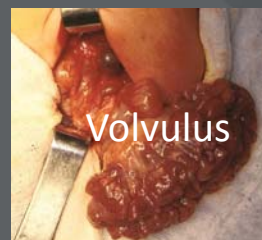
Inability to maintain nutrition and/or hydration solely with your own intestines.



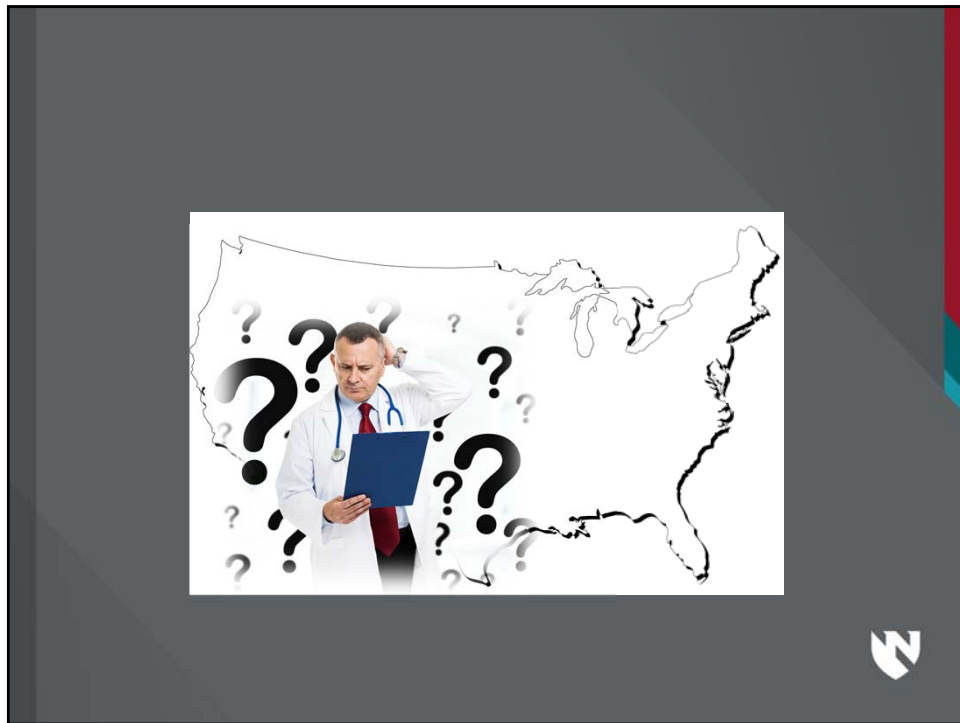
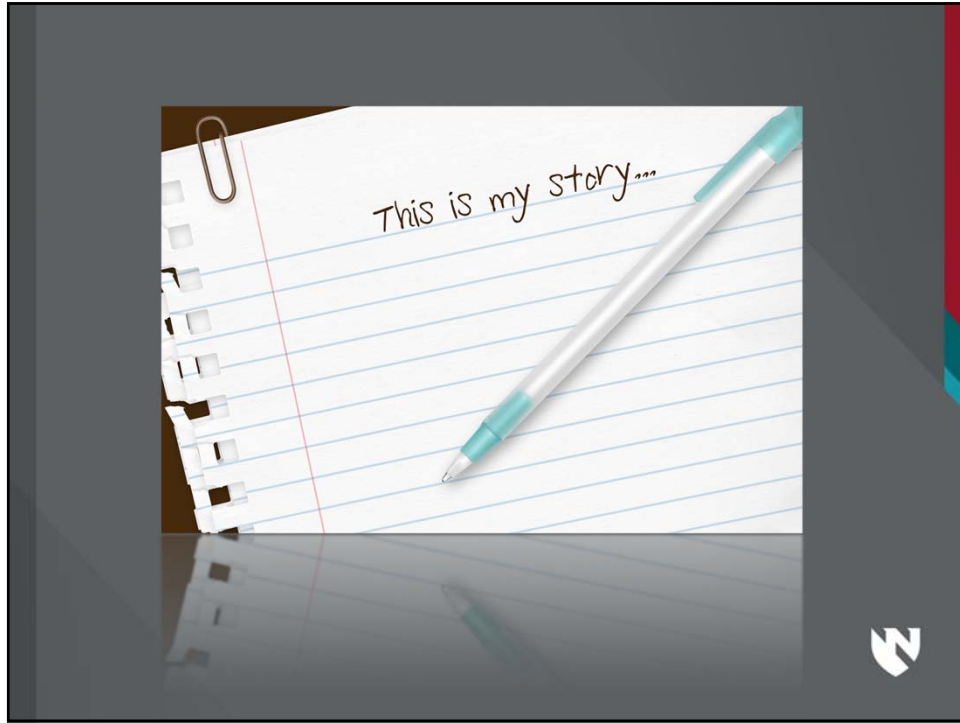
Not enough bowel
Catastrophic or gradual

-OR-

Enough bowel, but doesn't
work properly







Short Bowel Syndrome Foundation

education, support, and advocacy services

The Oley Foundation

@ShortBowel

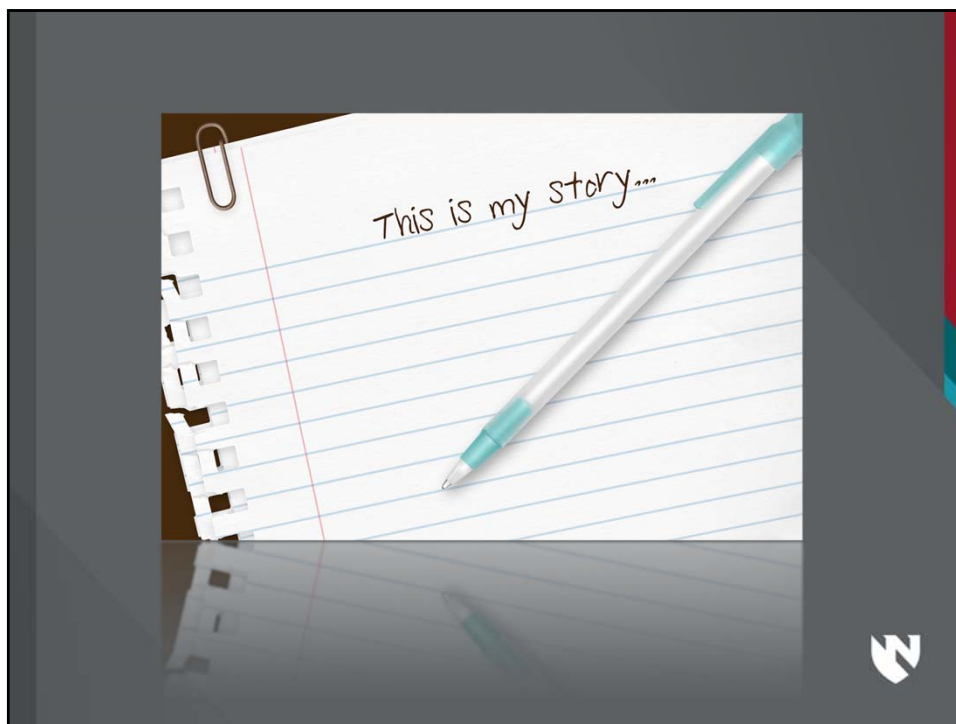
NORD National Organization for Rare Disorders Member Organization

@GutFailure

Short Bowel Support

UNIVERSITY OF Nebraska Medical Center






Region	Recipient Age	Years Post Transplant	Number Functioning / Alive	Survival Rate
U.S.	< 1 Year	1 Year	15	88.5
U.S.	1-5 Years	1 Year	106	87.3
U.S.	6-10 Years	1 Year	26	93.5
U.S.	11-17 Years	1 Year	19	82.6
U.S.	18-34 Years	1 Year	66	88.2
U.S.	35-49 Years	1 Year	76	77.2
U.S.	50-64 Years	1 Year	69	69.6
U.S.	65 +	1 Year	1	*
U.S.	< 1 Year	3 Year	17	68.6
U.S.	1-5 Years	3 Year	84	72.2
U.S.	6-10 Years	3 Year	20	85.0
U.S.	11-17 Years	3 Year	17	73.9
U.S.	18-34 Years	3 Year	41	66.0
U.S.	35-49 Years	3 Year	61.8	70.9
U.S.	50-64 Years	3 Year	55.3	54.6
U.S.	65 +	3 Year	58.3	*
U.S.	< 1 Year	5 Year	50.0	63.8
U.S.	1-5 Years	5 Year	50.0	63.7
U.S.	6-10 Years	5 Year	45.3	82.3
U.S.	11-17 Years	5 Year	45.3	65.0
U.S.	18-34 Years	5 Year	49.5	58.7
U.S.	35-49 Years	5 Year	35.0	57.2
U.S.	50-64 Years	5 Year	35.0	39.0
U.S.	65 +	5 Year	*	*


Graft survival

Numbers of intestine transplants being done around the country

	2017	2016	2015	2014	2013	2012
District of Columbia	20	20	17	19	13	19
Florida	17	24	21	21	12	4
Indiana	8	15	16	18	17	24
Nebraska	12	23	20	21	19	14
New York	15	16	15	14	11	13
Ohio	14	17	24	20	11	3

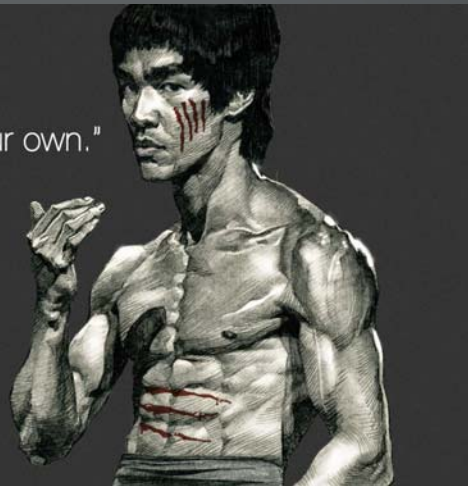


What can we do in intestinal rehab?



"Absorb what is useful,
Discard what is not,
Add what is uniquely your own."

- Bruce Lee



Diet

- Frequent small meals
- Low concentrated sugars
- Higher fat and protein
- Drinks that contain solute
 - G2, Powerade Zero, ORS



TPN Management

- Minimizing toxicity
- Maximizing time off
- Preventing dehydration



Introducing
a new lipid emulsion
option for adults
in the U.S.

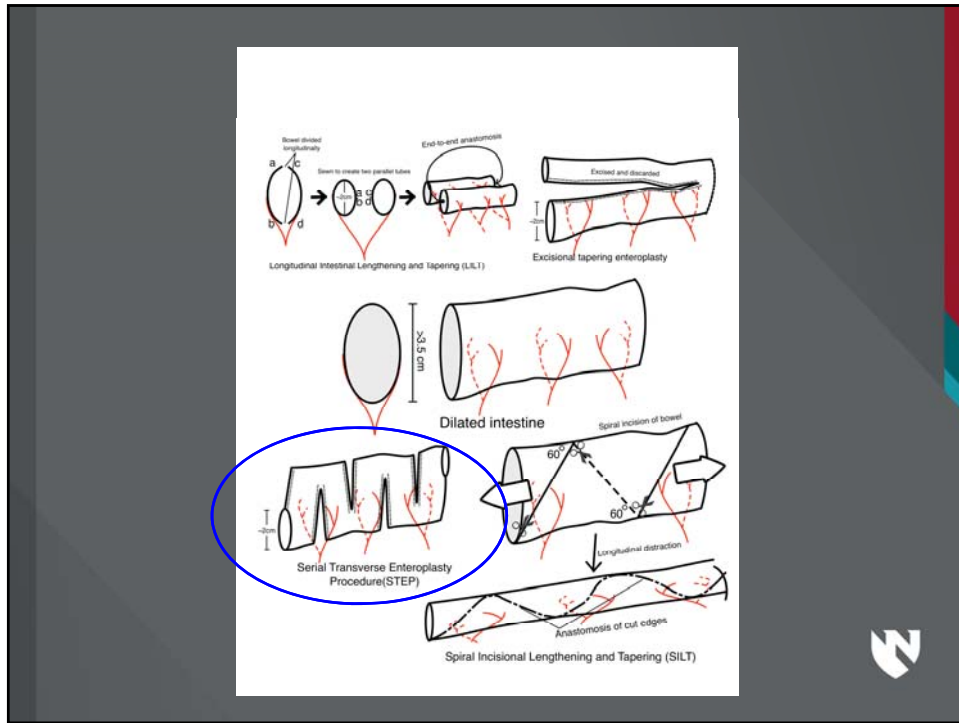
[See More Information ▶](#)



Medications

- To slow you down
 - loperamide, diphenoxylate
- To speed you up
 - erythromycin, metoclopramide, domperidone
- To make stool less toxic
 - cholestyramine, PPI/H2 blocker
- To modify bacteria
 - antibiotics, probiotics
- To help you absorb better

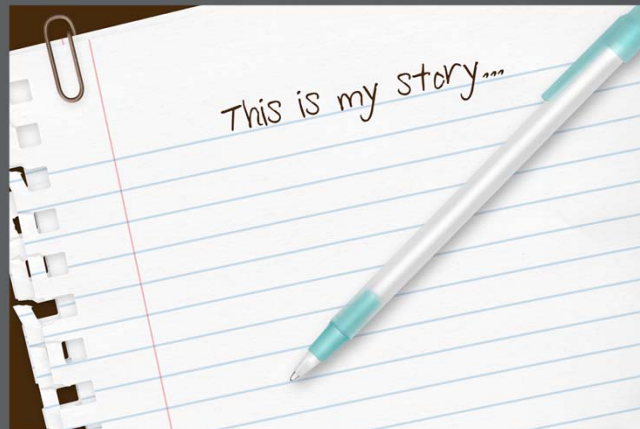
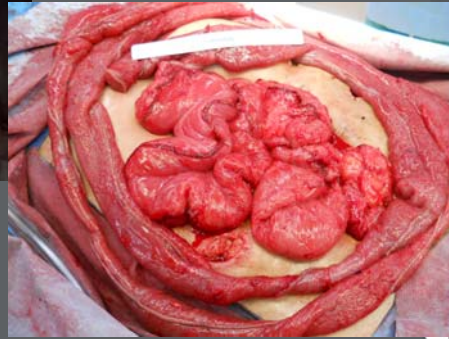
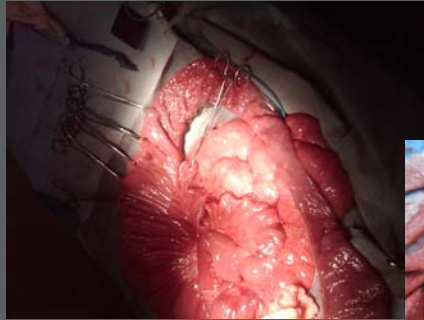



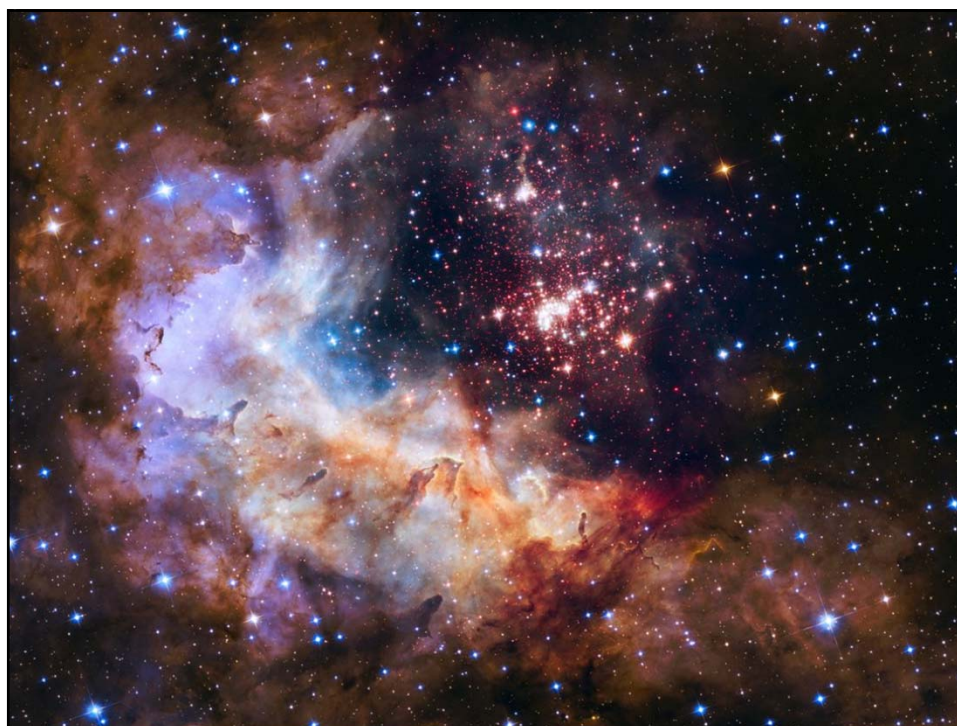


Serial Transverse Enteroplasty (STEP)




Longitudinal Excisional Tapering Enteroplasty (LETE)

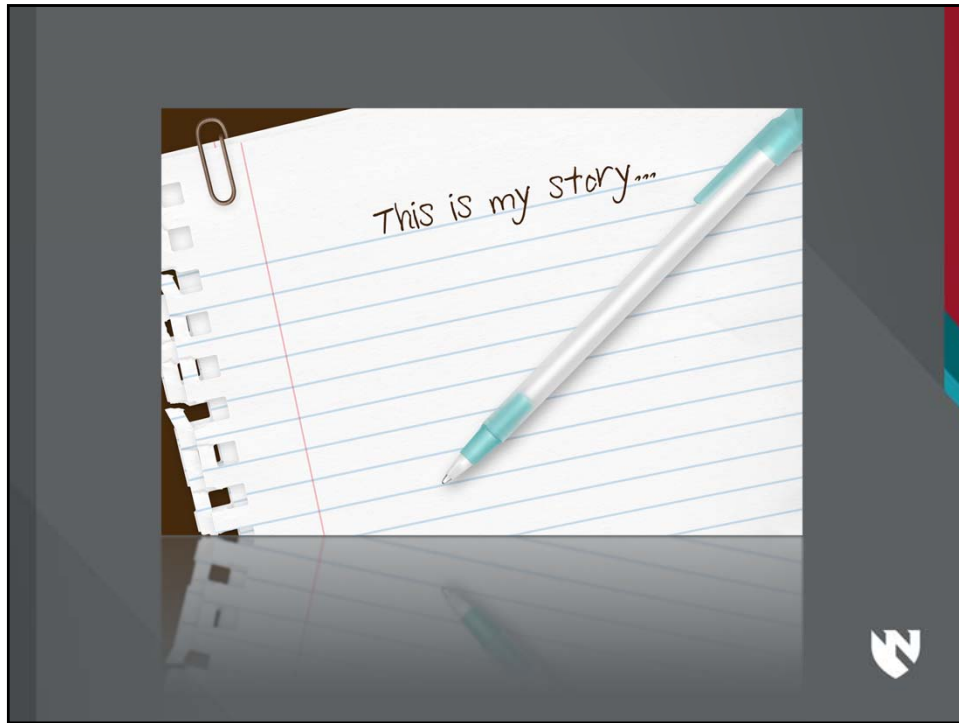




with
Teduglutide
Glepaglutide







HOPE.

